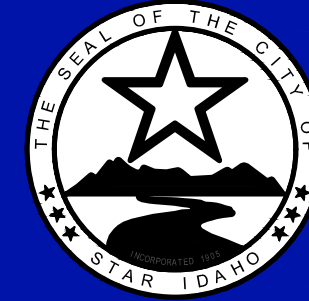


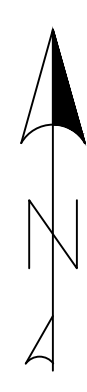
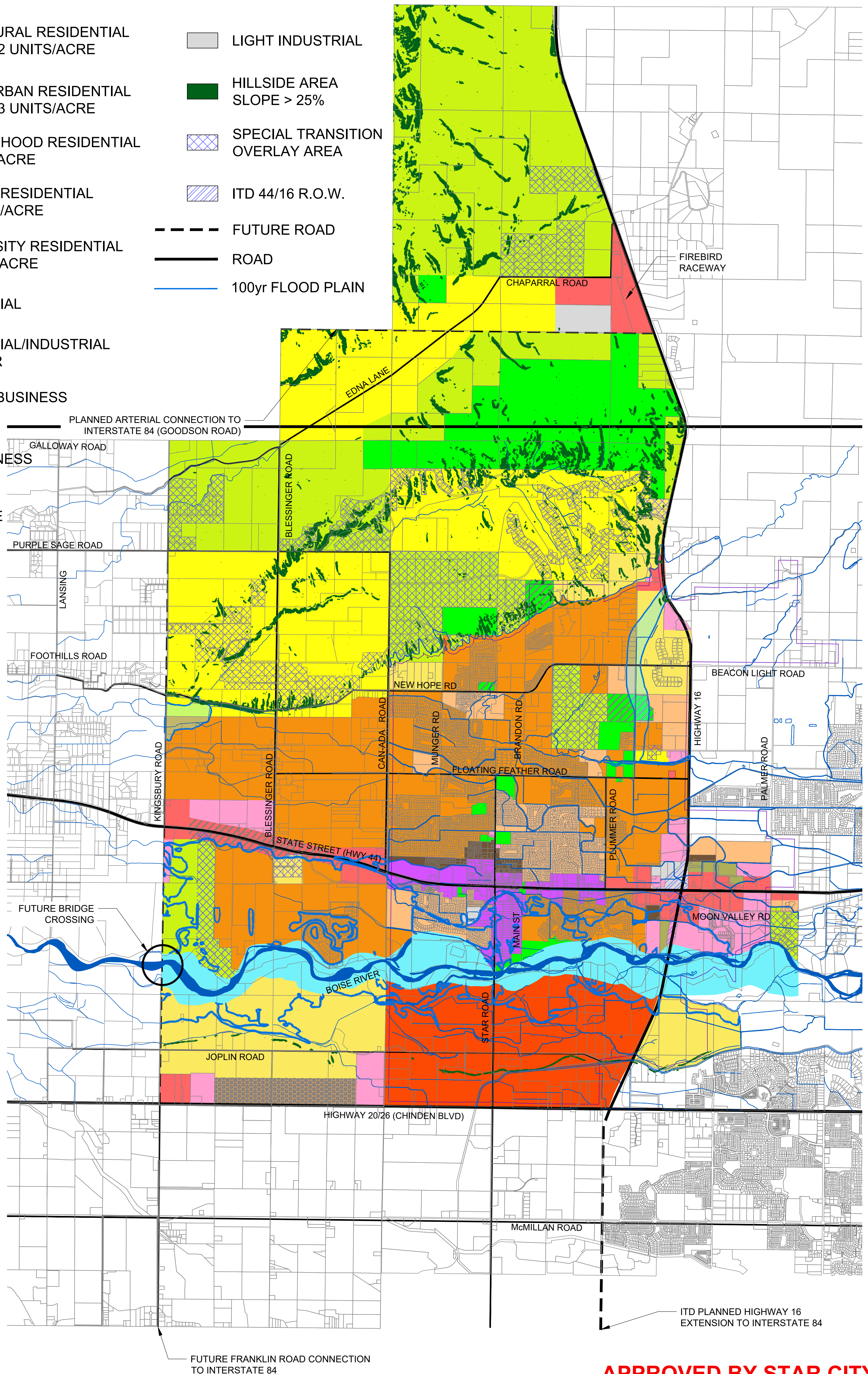


# CITY OF STAR



## LEGEND

- RURAL RESIDENTIAL  
1 UNIT/2-ACRE TO 1 UNIT/5-ACRE
- LOW DENSITY RESIDENTIAL  
MAXIMUM 1 UNIT PER ACRE
- ESTATE RURAL RESIDENTIAL  
MAXIMUM 2 UNITS/ACRE
- ESTATE URBAN RESIDENTIAL  
MAXIMUM 3 UNITS/ACRE
- NEIGHBORHOOD RESIDENTIAL  
3-5 UNITS/ACRE
- COMPACT RESIDENTIAL  
5-10 UNITS/ACRE
- HIGH DENSITY RESIDENTIAL  
10+ UNITS/ACRE
- COMMERCIAL
- COMMERCIAL/INDUSTRIAL  
CORRIDOR
- CENTRAL BUSINESS  
DISTRICT
- AGRIBUSINESS
- MIXED USE
- EXISTING PUBLIC USE /  
PARKS & OPEN SPACE
- FLOODWAY
- LIGHT INDUSTRIAL
- HILLSIDE AREA  
SLOPE > 25%
- SPECIAL TRANSITION  
OVERLAY AREA
- ITD 44/16 R.O.W.
- FUTURE ROAD
- ROAD
- 100yr FLOOD PLAIN
- FUTURE PUBLIC USE /  
PARKS & OPEN SPACE
- ZONE A FLOODPLAIN
- SOUTH OF THE RIVER  
PLANNING AREA - SEE  
ILLUSTRATED VISION PLAN



**APPROVED BY STAR CITY  
COUNCIL ON 06-07-2022**

# COMPREHENSIVE PLAN FUTURE LAND USE MAP

C:\Users\morgan\Desktop\New folder\Star Maps\CAD\Plans\PROPOSED LAND USE MAP.dwg Jun 22, 2022 - 11:42am