



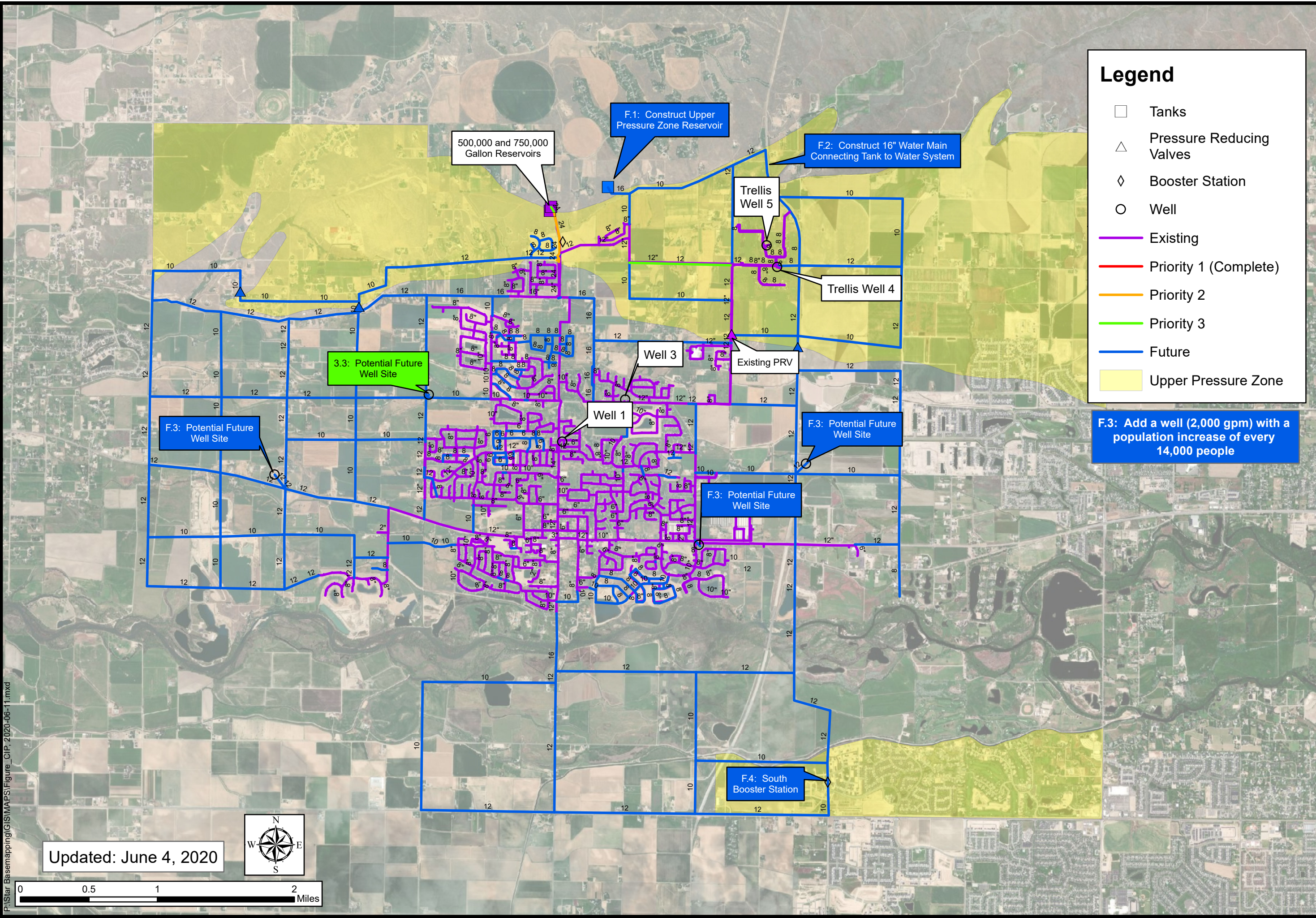
Prepared for:  
**STAR SEWER  
& WATER DISTRICT**

Title:  
**Capital Improvement  
Plan - Revised**

Figure:

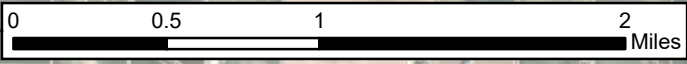
### Legend

- Tanks
- △ Pressure Reducing Valves
- ◇ Booster Station
- Well
- Existing
- Priority 1 (Complete)
- Priority 2
- Priority 3
- Future
- Upper Pressure Zone



**F.3: Add a well (2,000 gpm) with a population increase of every 14,000 people**

Updated: June 4, 2020



P:\Star Basemapping\GIS\MAPS\Figure\_CIP\_2020-06-11.mxd